



Cattle Feed and housing

What do cattle eat?

Most animals spend the summer months in fields grazing on grass and indoors in the winter when the grass has stopped growing. During the winter, they will eat grass which has been preserved as silage.

- New born calves are fed colostrum for the first six hours of life. Colostrum is produced by the calf's mother after giving birth and it contains essential antibodies, vitamins and minerals to protect the calf during its life. It is very important for calves to take in enough colostrum in the early stages of life as it determines future health and performance for the calf.
- Cattle diet is often supplemented to make their meat more nutritious for us to eat. For example, they are fed cereals such as barley or protein feeds such as beans once a day with dry or moist feeds to add energy, protein, minerals and vitamins.
- Some beef cattle are indoors all year around. Housed animals are fed a variety of food including grass products such as hay or silage.





Cattle Feed and housing

Grass and silage

Silage is grass or other green feed compacted and stored in airtight conditions, typically in a bail, without first being dried, and used as animal feed in the winter.



Plastic wrap is most commonly used in high-moisture baling. In this method the feed crop is cut sooner, immediately baled, and wrapped in plastic to ferment like silage. ... Because the feed is at its highest quality when cut, bale age is higher in protein and more palatable for livestock than dry hay.



Maize (corn)

Corn is an excellent energy source for cattle, too. From a plant perspective, corn is a grass – it just happens to be a much more nutritious grass than the stuff that's growing in your yard. The starch and protein that the corn kernel provides help cattle grow and thrive.





Cattle Feed and housing

Barley

When properly processed, mixed and fed, barley is an excellent feed grain. It can be used in diets for cattle, as an energy and protein source for pregnant cows.



Straw

If hay is not available, straw can be used as the only roughage source, as long as an adequate grain mix is also fed to the cows

Barley grain

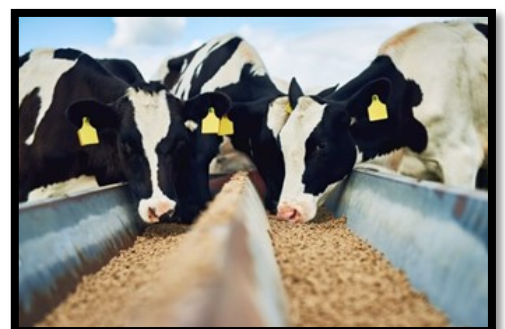


Straw bales



Cake and Pellets

Sweet feed is feed that has added sugar, usually molasses, to it. It comes pelleted form. It can be any mixer of different feeds and grains depending on the farmer





Cattle Feed and housing

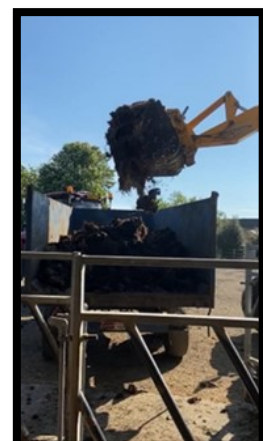
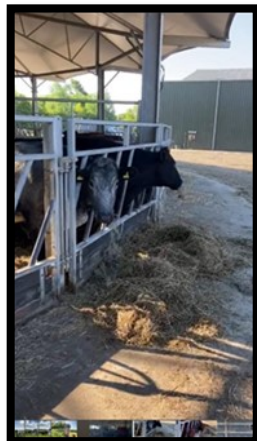
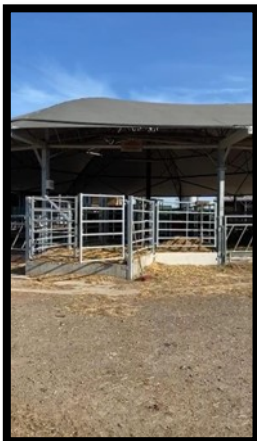
Where do cattle live?

Most farmers operate a system, which involves grazing in the summer and housing during the winter. A smaller proportion of farmers will keep a percentage of their herd inside in the summer



Cattle Roundhouse

8 segment (octagon) feed on the outside so the food remains clean. Internal handling system so it's easy to move cows around the shed. Muck used to spread onto fields as fertiliser. Lots of open air to reduce the spread of disease.





Cattle Feed and housing

Cattle in field

