

# GROUND BEETLE



Ground beetles are carnivorous predators and will eat anything they can overpower. Some species feed on seeds.



They use their sharp, powerful jaws for grabbing and crushing other insects and slugs.



Ground beetles are nocturnal and can be found hiding under logs and dead leaves during the day.



They vary in size and can be between 3mm to 2mm.

# DEVIL'S COACH HORSE



Devil's Coach Horse is a large carnivorous predatory rove beetle.



It uses its large pincers to crush its prey which includes insects, worms and spiders.

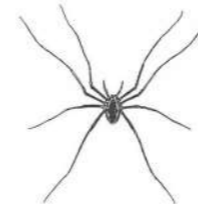
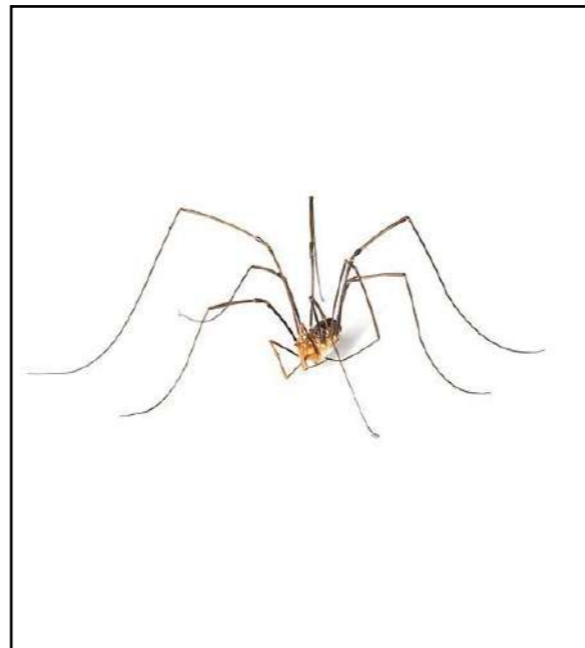


They are known for curling up their abdomen and assuming a scorpion position when they feel threatened. They also emit a foul fluid to deter predators.

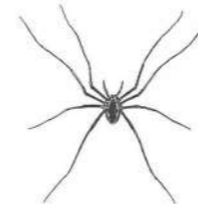


Beware—they can deliver a painful bite to us!

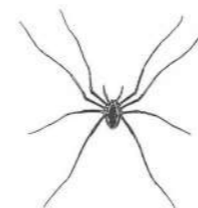
# HARVESTMAN



Harvestmen are arachnids but are different to spiders. They only have two eyes, they don't spin webs and they don't produce venom.



A harvestman is recognisable by its eight very long legs and its small round body. They do not regrow legs like other arachnids.



They usually eat smaller insects but some species are omnivorous scavengers. Using the hooks on their legs, harvestmen catch their prey.