

Where do sheep live?

In an enclosure such as a field, made up of local earth and the floor is of mud, and also has a strong fence with a gate.

What is the gestational period for a sheep?

Gestation in sheep varies from 142 to 152 days with the average being 147 days. Just like people, individual pregnancies can vary, gestation periods of 138 to 159 days are not unheard of. Ewes carrying multiple lambs tend to have shorter gestations while male lambs (and heavy birth weight lambs) are usually carried for longer than female lambs.

Lambing

A mother sheep is normally taken into a barn to give birth. They can have up to four lambs at a time but mostly have one or two. Baby lambs will be looking for food from their mother when they are only 20 minutes old and they can quickly stand on their own. It is critical that lambs have enough colostrum within the first 18-24 hours of life (milky fluid that's released from the udders of sheep shortly after they've given birth).



What do sheep eat?

Sheep graze in fields and feed off of the grasses that grow naturally where they graze. However, in the winter time when grasses do not grow as easily, sheep are often fed hay or grains. The flat fields where they graze and live are often called pastures. Sheep can also live in mountain areas. Because of their thick wool coats, sheep can survive in colder climates.



Do sheep have teeth?

Sheep have four pairs of incisors on their lower jaw, a dental pad (no teeth) on their upper jaw, and grinding teeth on the back part of their jaw. When lambs are born, they have four pairs of baby or "milk" teeth.



Communication

Sounds made by domestic sheep include bleats, grunts, rumbles and snorts. Bleating ("baaing") is used mostly for contact communication, especially between ram and lambs, but also at times between other flock members.



Do sheep make friends?

Sheep are a very social animal. They require the presence of at least 4 or 5 sheep which when grazing together maintain a visual link to each other

Do they have good eye sight?

Yes, they have nearly 360 degree vision But they cannot see immediately in front of their noses

Sheep senses

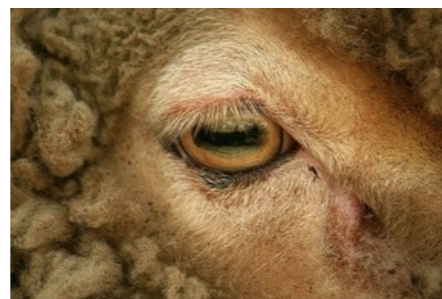
Because they are a target animal being in an open field, sheep require excellent senses to enhance their chances of survival in the wild.

Can sheep see in colour?

Sheep and other livestock see colours, though their colour vision is not as well -developed as it is in humans. Sheep will react with fear to new colours

Have sheep good hearing/taste and smell ?

Sheep have excellent hearing. They can direct their ears in the direction of a sound. Sheep have an excellent sense of smell which helps ewes locate their lambs. Sheep will select different types of plants to eat



Sheep language– part 1

Sheep and lambs

Sheep are over one year of age. They have usually produced offspring. Lambs are less than one year of age. They have usually not produced offspring.

Lamb and mutton

Lamb is also the term for the flesh of a young domestic sheep eaten as food. The meat from a sheep that is older than 12 months is called mutton. Yearling mutton is the meat from a sheep between 1 and 2 years of age. Mutton has a much stronger flavour than lamb.

Wool

The fibre that most sheep grow is called wool. The wool from one sheep is called a fleece. Shearing is when the wool is cut off (or shaved) from the sheep.

Ewes

A female sheep is called a ewe. The process of giving birth to lambs is called lambing. Another word for pregnancy is gestation.

Rams

A male sheep is called a ram. A young male is called a ram lamb. In parts of the United Kingdom, a ram is called a tup and the mating season is called tuppung.

Wethers

A castrated male sheep is called a wether. Wethers are less aggressive than rams.

Flock

A group of sheep is called a flock.

Sheep language– part 2

Shepherd

A shepherd is a person who cares for sheep.

Shepherder

A shepherder is a herder of sheep (on open range). It is someone who keeps the sheep together in a flock.

Sheep dog

A sheep dog or sheepdog is generally a dog or breed of dogs historically used in connection with the raising of sheep. These may include guarding sheep and other livestock in farms for farmers or herding dogs used to herd sheep and other livestock

Farm

A farm is an area of land, including various structures, devoted primarily to the practice of producing and managing food. It usually includes cultivated land for producing crops

Abattoir

An abattoir is a building where animals are slaughtered and processed into meat products. It comes from the French word, abattre, "to strike down."



There are many of breeds of the sheep.

Here are just a few.

